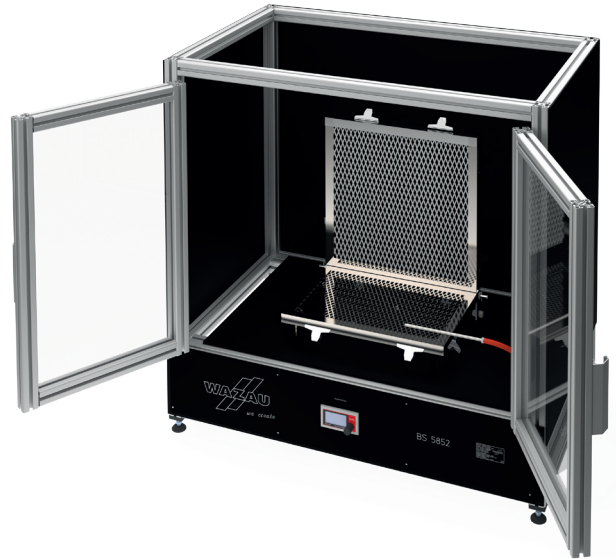


BS 5852

BS 5852 Clause 11, Ignition source 1, 2 & 3 | DIN 1021-2



SCOPE

Assessment of the flammability of upholstered furniture

PRINCIPLE

A material combination of upholstery and cover is mounted on a 2-part frame and exposed to a gas flame. The extent of any resulting fire or smoldering fire is determined.

COMPONENTS

Combustion chamber with electronic flow meter, mechanical flow controller and burner, frame made of aluminum profiles and sheets, anodized, 2 window doors
Test frame stainless-steel
Stencil stainless-steel
Clamps
Manual

DIMENSIONS

Combustion chamber
Width x depth x height: 1020 x 650 x 1040 mm*
Weight: approx. 60 kg

SUPPLIES

Butane gas, 0,28 bar inlet pressure

TO BE PROVIDED BY THE CUSTOMER

Extinguishing tank of the size of the test structure
Flue gas exhaust system
Test room > 20 m³

* Our products are constantly being further developed. For this reason, the actual dimensions may vary.